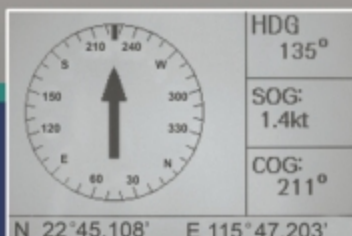
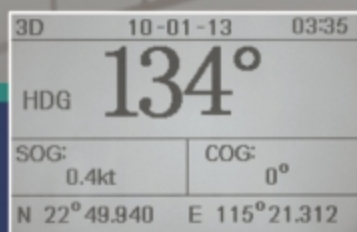


ONWA[®]

MODEL KEC-30

LCD Display Electronic Fluxgate Compass

- Fluxgate heading sensor with high accuracy and stability
- Automatic correction for local magnetic variation
- NMEA heading data output for other navigation equipment
- 4.5 silver bright LCD display
- Multiple display mode



SPECIFICATION OF KEC-30

1. Accuracy

$\pm 1.0^\circ$ (excluding magnetic anomalies)

2. Resolution

$\pm 1.0^\circ$ (excluding magnetic anomalies)

3. Correction

- Automatic by running the boat over 360°
- Manual input by every 30°

4. Roll and Pitch $\pm 45^\circ$

5. Follow-up $45^\circ/s$ max.

6. Interface

NMEA ver. 2.0 Output: HDT, HDG and HDM
NMEA ver. 2.0 Input: RMC, GSA

DISPLAY

4.5 diagonal 95(W)X63(H) mm LCD,
240x 160pixels

LANGUAGE

English, Chinese

ENVIRONMENT

Temperature: -15° to $+55^\circ$ for Display unit,
 -25° to $+70^\circ\text{C}$ for Fluxgate sensor.
Waterproofing: IPX5 for Display unit,
IPX6 for Fluxgate sensor.

POWER SUPPLY

12-24 VDC, 240-120MA

EQUIPMENT LIST

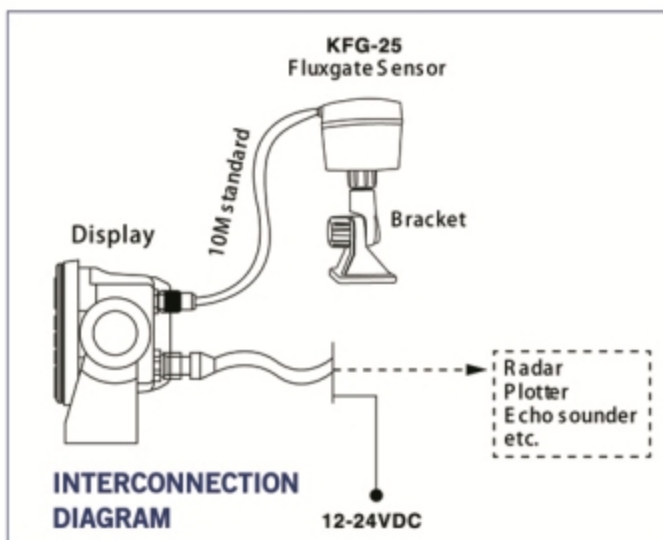
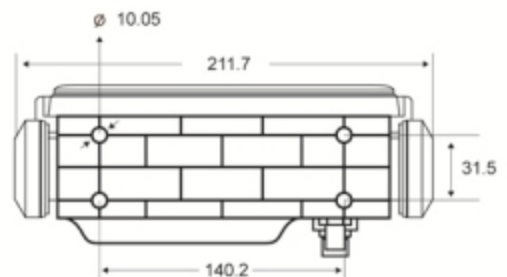
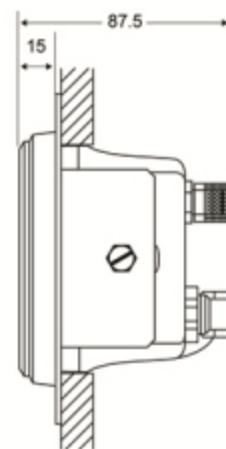
Standard

1. Fluxgate Sensor KFG-25 1 unit
2. Display unit KEC-30 1 unit
3. Installation Materials

OPTIONS

1. Outdoor Fluxgate Compass KFG-28

DISPLAY UNIT



KFG-25
Fluxgate Sensor

Bracket

Display

10M standard

Radar
Plotter
Echo sounder
etc.

12-24VDC